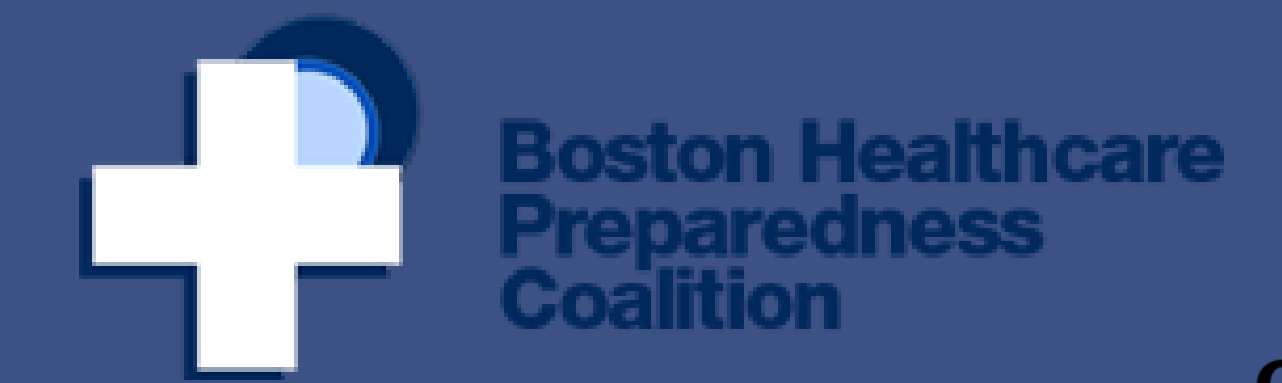


Preparing Your Healthcare Coalition for a Winter Storm: Best Practices and Lessons from the Boston Healthcare Preparedness Coalition



Alison Randall, BS and Ben McNeil, MS, Office of Public Health Preparedness, Boston Public Health Commission

BACKGROUND



The Boston Healthcare Preparedness Coalition (HPC) is composed of five core healthcare disciplines - community health centers, EMS, hospitals, long term care facilities and public health - with additional members from home health providers, dialysis centers, university health and mental health agencies.

Boston Public Health Commission's Office of Public Health Preparedness manages the Boston HPC and serves as the ESF-8 lead for the City of Boston.

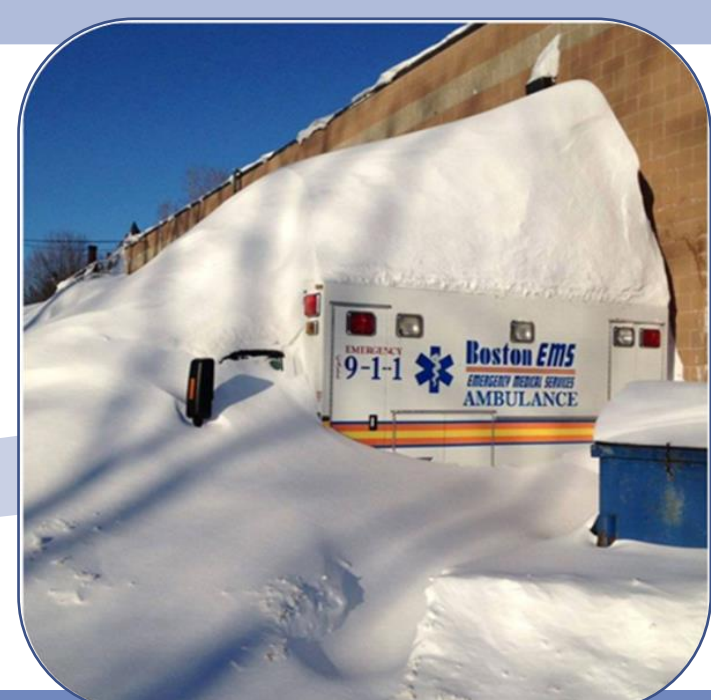
Public health and healthcare system response and recovery efforts in the city are coordinated through the Stephen M. Lawlor Medical Intelligence Center (MIC).

HEALTHCARE SYSTEM IMPACTS

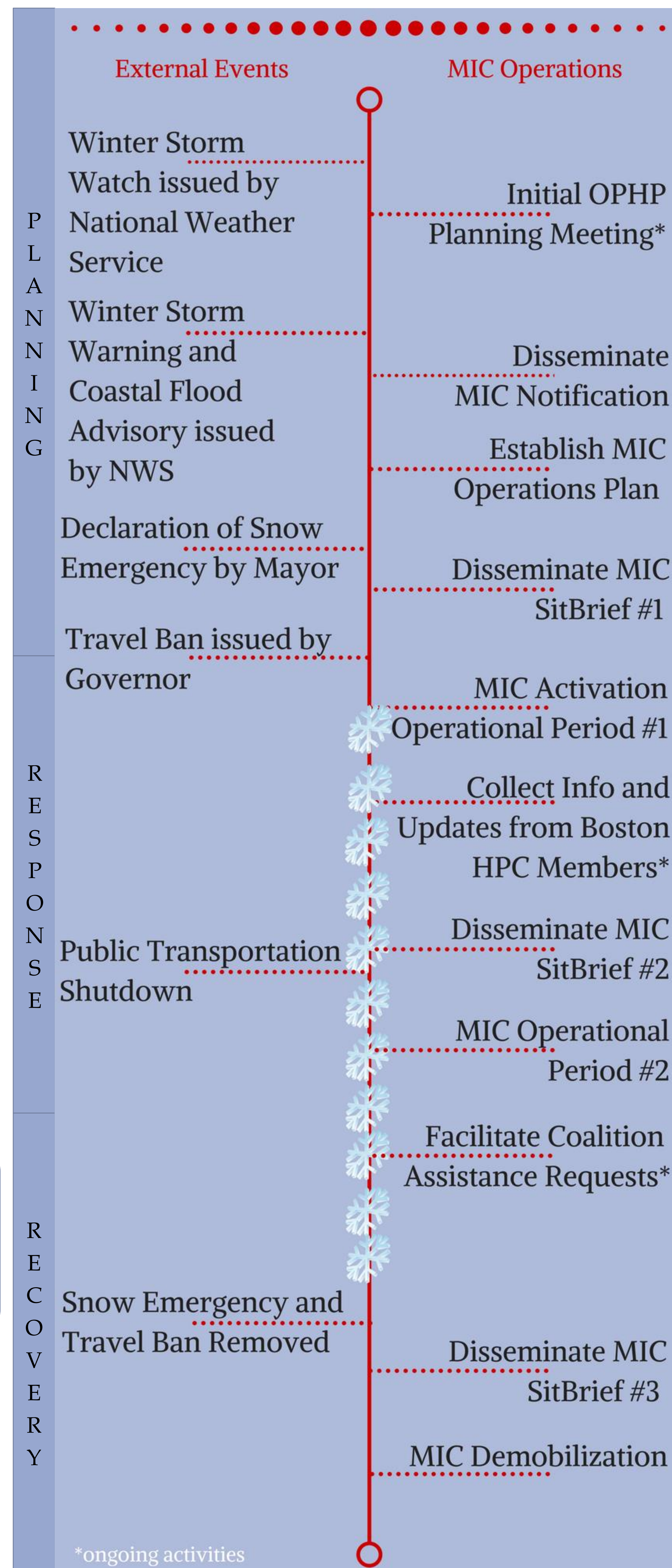


Interruption to delivery of healthcare services:

- Patient access to healthcare facilities and healthcare services
- Damage to facilities, transportation infrastructure, and/or utilities
- Staff transport and vendor delivery

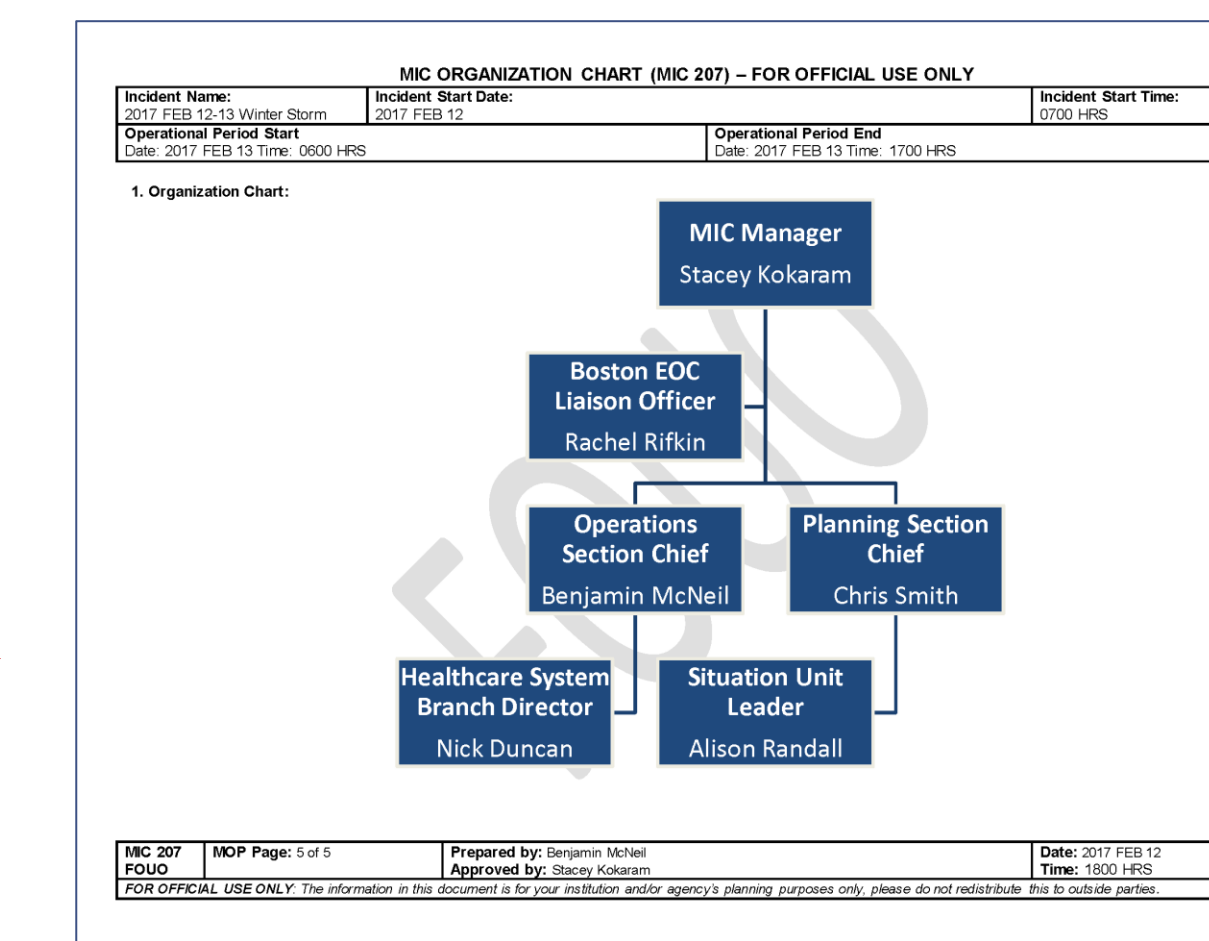


OPERATIONAL TIMELINE



COALITION RESPONSE TOOLS

MIC Notification: Essential information on an emerging or current incident(s) delivered to public health and healthcare partners using a mass notification system.



MIC Operations Plan: A planning document detailing a MIC Operational Period, including objectives, ICS staffing assignments and communication information.

MIC Situational Briefing: Situational awareness document containing incident information, and known or anticipated impacts collected from collaboration with healthcare partners.

Coalition Status Reporting: MIC operations tool to collect and synthesize healthcare system impacts.

CONSIDERATIONS

- Understand your healthcare partners' storm essential priorities and challenges
- Integrate with emergency management to facilitate resource requests on behalf of your coalition partners
- Establish regular operational status checks with coalition partners
- Designate discipline representatives to serve as liaison between coalition and individual facilities
- Ensure your staffing plan(s) account for travel and/or shelter in place considerations (cots, food, personal preparedness)